

## Homework w/c 21<sup>st</sup> October 2024

Answer these questions in your blue maths homework book.

Don't forget to show your working out.

### Base Camp

- 1)  $62 + 30 =$
- 2)  $56 - 10 =$
- 3)  $82 + 7 =$

### Climbing

- 1)  $633 + 300 =$
- 2)  $11 \times 10 =$
- 3)  $953 - 400 =$

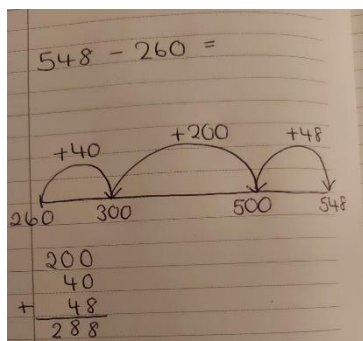
### Peak

- 1) Double 8 and add 6 =
- 2)  $953 - 532 =$
- 3)  $632 + 139 =$

### Summit

- 1)  $142 + 689$
- 2) 6 lots of 2, then add 7 =
- 3)  $8 \times 2$  then double it.

If you aren't sure how to subtract yet, you could use a number line to find the difference, like this:



## Homework w/c 21<sup>st</sup> October 2024

Answer these questions in your blue maths homework book.

Don't forget to show your working out.

### Base Camp

- 1)  $62 + 30 =$
- 2)  $56 - 10 =$
- 3)  $82 + 7 =$

### Climbing

- 1)  $633 + 300 =$
- 2)  $11 \times 10 =$
- 3)  $953 - 400 =$

### Peak

- 1) Double 8 and add 6 =
- 2)  $953 - 532 =$
- 3)  $632 + 139 =$

### Summit

- 1)  $142 + 689$
- 2) 6 lots of 2, then add 7 =
- 3)  $8 \times 2$  then double it.

If you aren't sure how to subtract yet, you could use a number line to find the difference, like this:

